

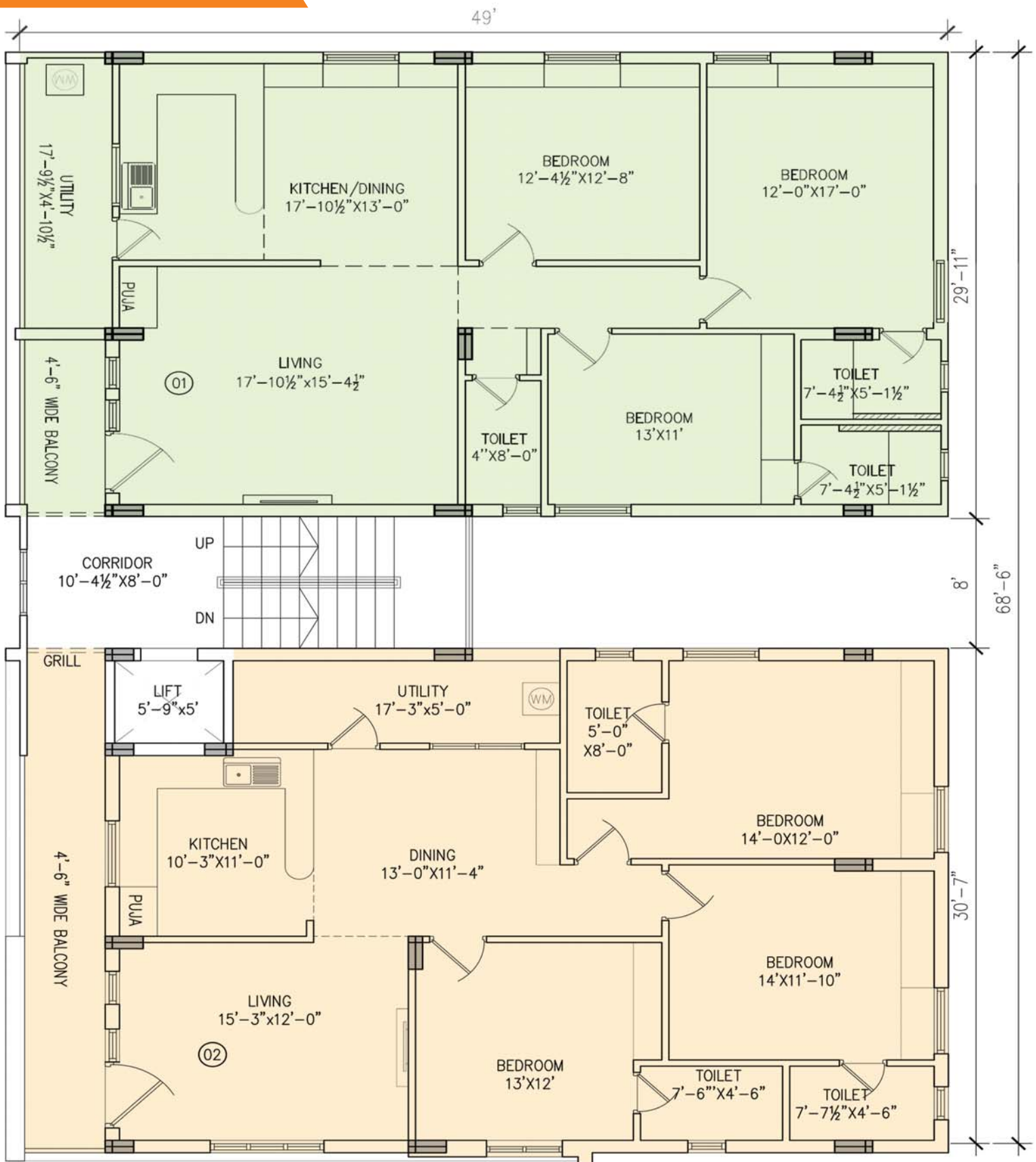


Lakshmi's
CRYSTAL

@ Patamata Lanka, Vijayawada

key for your new beginning..

FLOOR PLAN



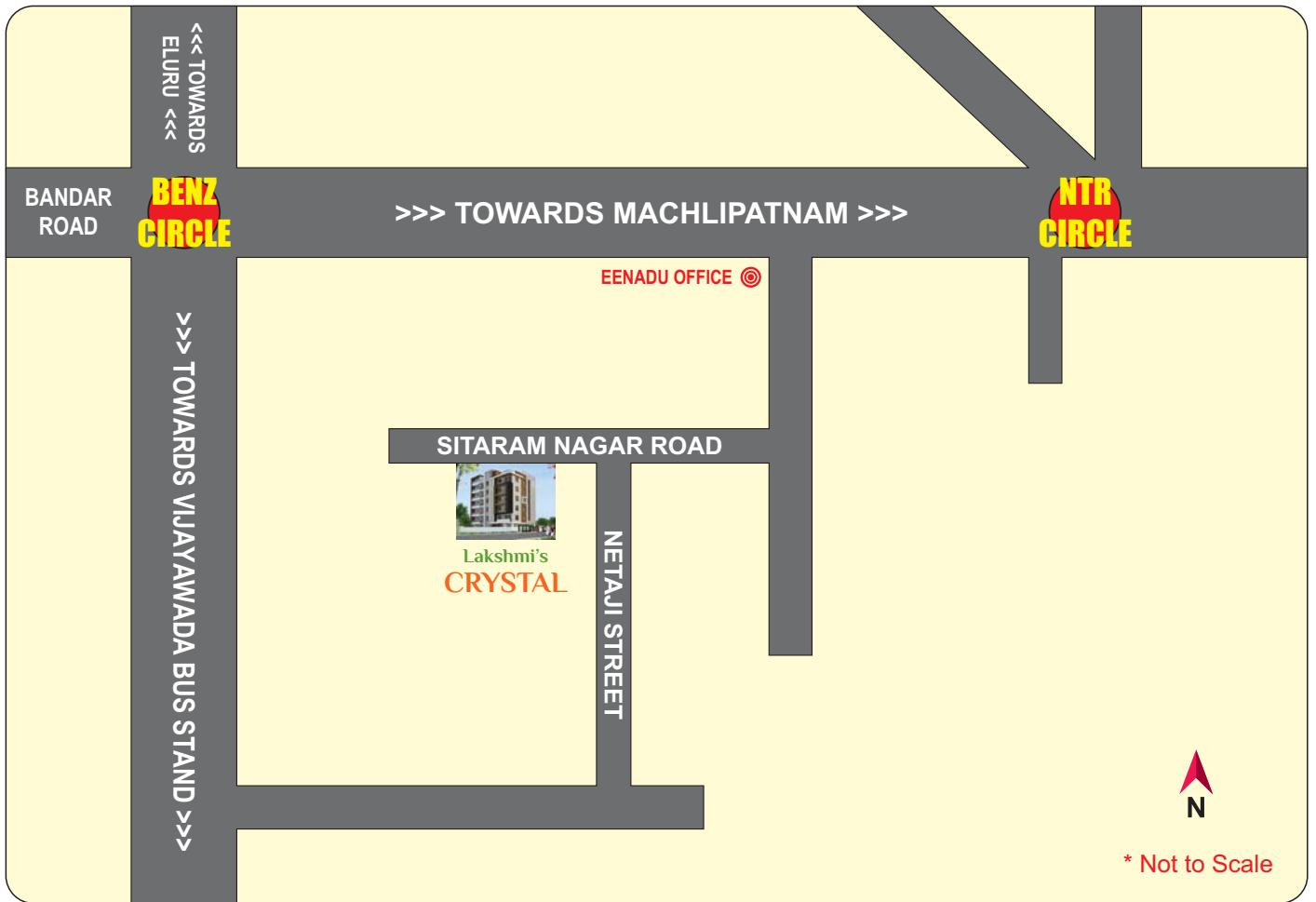
AREAS :								NORTH :
FLAT	CARPET	BALCONY & UTILITY	OUTER	PLINTH	COMMON	PARKING	TOTAL	
01	1228	135	103	1466	366	120	1952	
02	1115	237	114	1466	366	120	1952	

SPECIFICATIONS

- Structure : RCC Framed Structure
- Super structure : Red Bricks with Cement mortar, outer walls of 9” thick and other (Including walls in ducts and corridor) walls of 4” thick.
- Plastering : Plastering with Sponge Finish to Internal and External walls.
- Doors : Main Door of Best Teak Wood Frames with Teak Wood paneled shutters with good quality hardware. Internal doors will be good quality laminated flush doors along with teak wood frame. Bathroom doors will be good quality WPC Doors & Frames.
- Windows : UPVC 2.5 track frames with shutters and mesh shutter fitted with glass & standard hardware, and French door with 3 track wherever necessary. MS grills will be provided to all windows.
- Flooring : Vitrified Tiles (Double Charge) Flooring of premium quality colours of size 800 X 800 (MM) in hall, dining, bedrooms and kitchen. Common corridor and Staircase with Granite & SS Railing for steps.
- Cupboards : Cement Flanks will be provided in each flat (Maximum 25% of Plinth Area).
- Kitchen : Cooking platform with Black granite top, provided with Stainless Steel Sink.
- Dadoing : Dadoing with Glazed Ceramic tiles (12” x 18”) up to 3 Feet height above platform in kitchen & up to lintel level in Toilets.
- Plumbing : CPVC pipes (Aashirvad / Astral) and fittings for Internal with adequate CP taps, Mixers, Showers etc. of (CERA/JAGUAR make) or equivalent, Superior quality PVC pipes & fittings (PRINCE make or equivalent) for external Sewerage lines.
- Toilets : Western style commodes of (CERA or HINDWARE make or equivalent) will be provided.
- Electrical : Concealed copper wiring of (HAVELLS/ANCHOR/ FINOLEX) with adequate points and modular switches of (LEGRAND/GM) or equivalent with metal distribution boards, Cable TV, Telephone and an Internet point in drawing room and master bedroom. One 8KV power connection will be provided for each flat.
- Generator : Generator (Mahindra make) for lift, common areas and 4 light points, 4 fan points and 2 plug points in each flat.
- Lift : 6 passenger capacity JOHNSON / KONE make lift with automatic doors will be provided.
- Water supply : One drinking water connection in kitchen with Municipal water & other taps with bore well water supplied through over head tank.
- Wall Finishes : Internal: Putty (MYK-Laticrete / Birla) finish with plastic emulsion paint.
External: Texture or Wall care putty finishes on all external walls.

* GST & Registration charges will be extra.

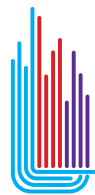
ROUTE MAP



SOME OF OUR COMPLETED VENTURES IN AP



OUR COMPLETED VENTURE IN HYDERABAD



Lakshmi Infratech
India Pvt Limited.

Corporate Office @ Hyderabad : # 7-1-636/23, 3rd Floor of Sri Ganesh Nilayam, Model Colony, Near ESI Hospital, S.R.Nagar, HYDERABAD - 500 038.

Branch Office @ Tenali : D.No.165 &150, Behind Chavas Grand, Near Municipal Stadium, Govt. Hospital Road, Tenali.

Mobile : 9494 151 583, 81060 21666. | website : www.lakshmiinfra.com | email : marketingap@lakshmiinfra.com

* This brochure is only a conceptual representation of the project and not a legal offering.